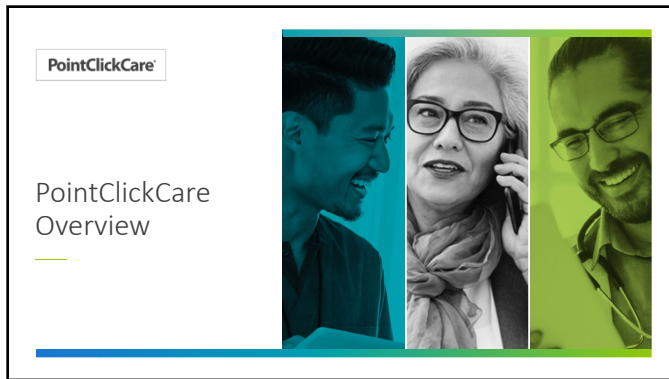


“PointClickCare”

CE Provider: Dept. for Behavior Health, Developmental and Intellectual Disabilities

KBN Provider-Training Number: 5-0051-0126-753




---

---

---

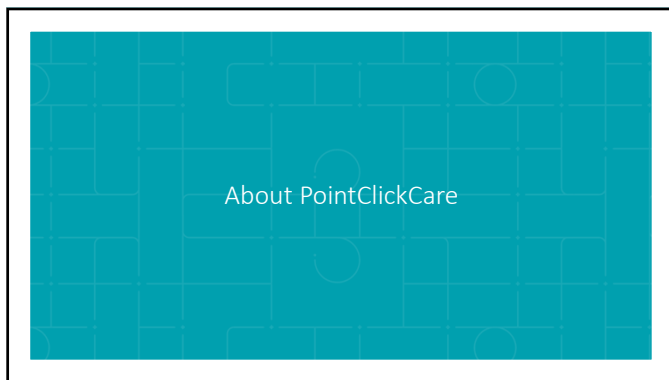
---

---

---

---

---




---

---

---

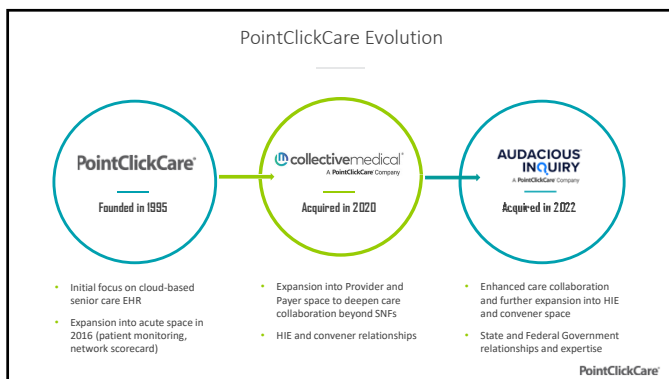
---

---

---

---

---




---

---

---

---

---

---

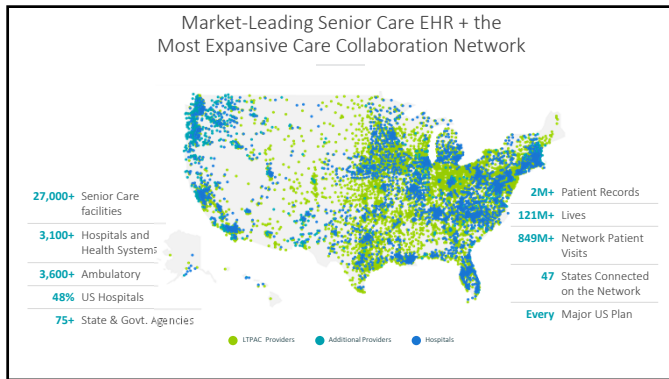
---

---

“PointClickCare”

CE Provider: Dept. for Behavior Health, Developmental and Intellectual Disabilities

KBN Provider-Training Number: 5-0051-0126-753




---

---

---

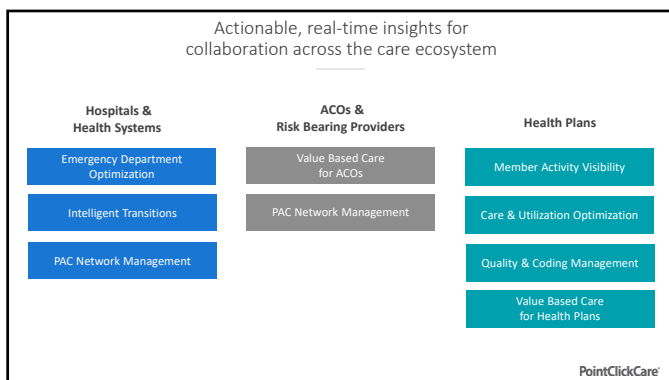
---

---

---

---

---




---

---

---

---

---

---

---

---